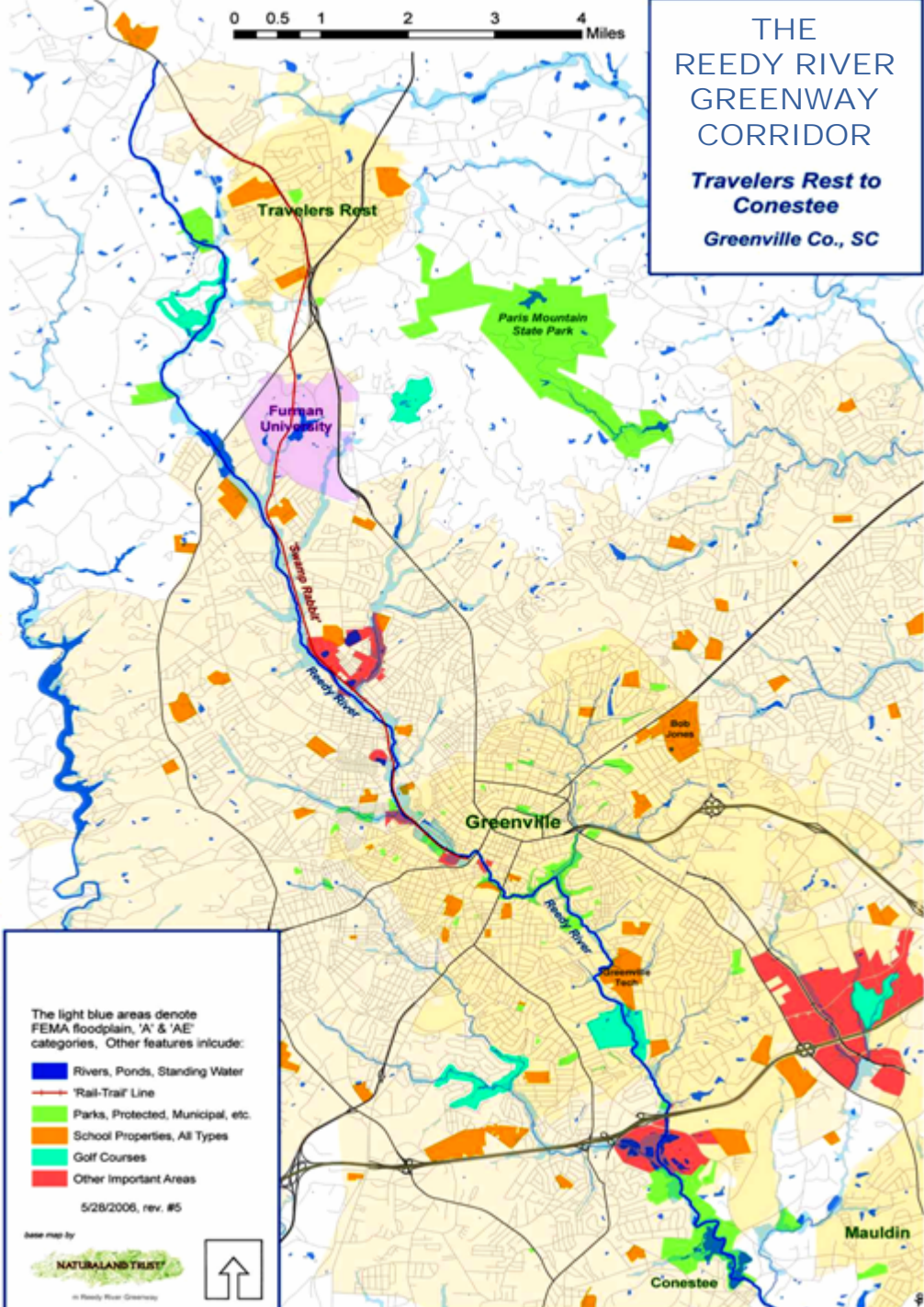


THE REEDY RIVER GREENWAY CORRIDOR

*Travelers Rest to
Conestee
Greenville Co., SC*



NOTE:

This base map and the highlighted version of the map on the other side of this sheet are intended for discussion purposes only. They should not be taken as an indication of intention or commitment by any affected landowners, governments, or other entities to proceed with any particular plan or vision. Our goal in preparing this map is only to stimulate conversation about the potential of the Reedy River corridor as a greenway.