



CITY PARK & REEDY RIVER

NEIGHBORHOOD DEVELOPMENT AREA

Greenville, SC | January 23, 2017

AGENDA

1 Update on Active Tasks since October Council Briefing

2 Update on Park Features

3 Action Items Moving Forward

4 Schedule



GUIDING PRINCIPLES



1

Build Upon Existing Plans, Conversations & Ideas



5

Enhance Connectivity and the Public Realm



2

Foster Authentic Civic Engagement



6

Protect and Enhance the Reedy River



3

Enable Equitable Development & Affordable Housing Opportunities



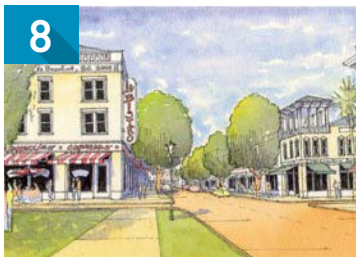
7

Integrate Innovative Sustainable Systems into Public Space



4

Create Accessible and Welcoming Public Spaces



8

Implement the Community Vision

NEIGHBORHOOD CONVERSATION & COMMUNITY IDEAS



1900's - 2013 2013 2014 2015 2016

City Park Visions

1907

Beautifying and Improving Greenville, South Carolina

15+

Community Plans with vision for the City Park along Reedy River

City Park Master Plan

7

Day Charrette

20+

Community Organizations Represented on Advisory Committee

Westside Comprehensive Plan

5,000

Households & businesses contacted

375

Stakeholders directly engaged in planning process

City Park Implementation Team Selection

14

National teams submitted

3

Interviewed

MKSK

Selected

City Park Implementation Plan

**March
May
August**

Advisory Committee meetings

September

Southernside Neighborhood Association

September

West Greenville Neighborhood Association

Tonight >>

October

Public Workshop

CITY PARK IMPLEMENTATION PLAN



Enjoy these meetings by the City - keep them coming!

The proposed park is so exciting!!! Thank you for all of your hard work in developing these plans and creating **a wonderful new place for the community**. This is truly thrilling!!!

Nice evolution of planning for a **unique city environment**

Good planning!
I like the layout of the park and numerous places for activities

It's beautiful!
Great ideas. I would love to be part of the future plans

Lookin' good!

I like that the plan is comprehensive and **inclusive of community input**

WHY INVEST IN CITY PARK?



WHY INVEST IN CITY PARK?

Public Health

Community Building

Quality of Life

Quality of Environment



WHY INVEST IN CITY PARK?

Public Health

Community Building

Quality of Life

Quality of Environment

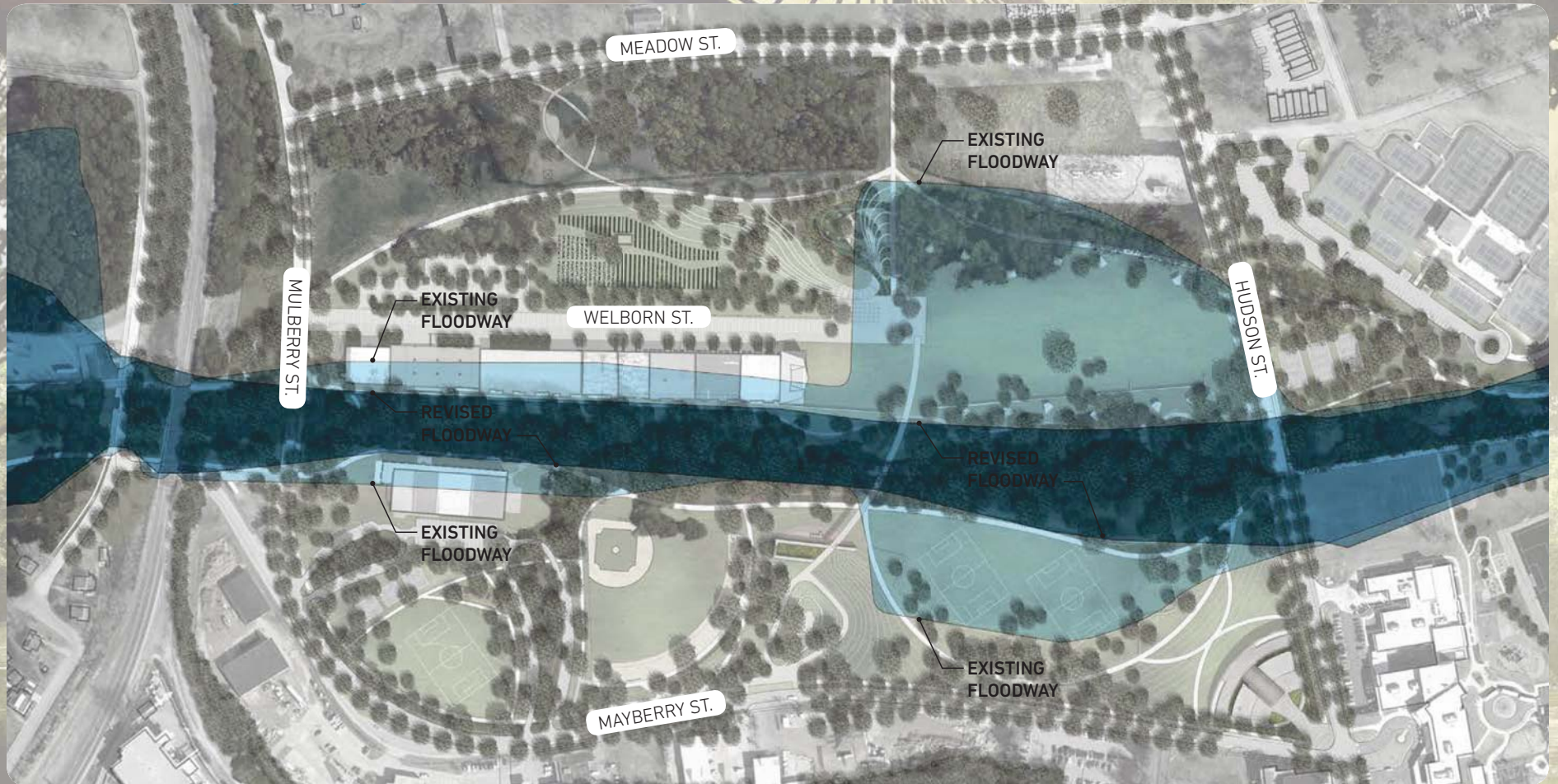


Health, Social and Economic Equity
I M A G E O F T H E C I T Y



ACTIVE TASKS

FEMA Preparation of LOMR Submission and initial meeting with City & County staff



ACTIVE TASKS



FEMA Preparation of LOMR Submission and initial meeting with City & County staff

Community Character Plan Draft framework for development in alignment with community vision

Form-Based Code Draft land development regulation in alignment with community vision

ACTIVE TASKS

FEMA Preparation of LOMR Submission and initial meeting with City & County staff

Community Character Plan Draft framework for development in alignment with community vision

Form-Based Code Draft land development regulation in alignment with community vision

City-Owned Property Preparation of draft RFP for City property (incorporating CCP and FBC)



ACTIVE TASKS

FEMA Preparation of LOMR Submission and initial meeting with City & County staff

Community Character Plan Draft framework for development in alignment with community vision

Form-Based Code Draft land development regulation in alignment with community vision

City-Owned Property Preparation of draft RFP for City property (incorporating CCP and FBC)

Fundraising & Communications Material Community & environmental benefits of City Park



ACTIVE TASKS

FEMA Preparation of LOMR Submission and initial meeting with City & County staff

Community Character Plan Draft framework for development in alignment with community vision

Form-Based Code Draft land development regulation in alignment with community vision

City-Owned Property Preparation of draft RFP for City property (incorporating CCP and FBC)

Fundraising & Communications Material Community & environmental benefits of City Park

Stream & Wetland Restoration Coordination with local permitting consultants and advocacy groups

ACTIVE TASKS

FEMA Preparation of LOMR Submission and initial meeting with City & County staff

Community Character Plan Draft framework for development in alignment with community vision

Form-Based Code Draft land development regulation in alignment with community vision

City-Owned Property Preparation of draft RFP for City property (incorporating CCP and FBC)

Fundraising & Communications Material Community & environmental benefits of City Park

Stream & Wetland Restoration Coordination with local permitting consultants and advocacy groups

Parks Conservancy Arrangement for discussion of trust or conservancy for park stewardship



Susan Rademacher

pittsburgh parks conservancy

charleston parks conservancy

Harry Lesesne



ACTIVE TASKS

FEMA Preparation of LOMR Submission and initial meeting with City & County staff

Community Character Plan Draft framework for development in alignment with community vision

Form-Based Code Draft land development regulation in alignment with community vision

City-Owned Property Preparation of draft RFP for City property (incorporating CCP and FBC)

Fundraising & Communications Material Community & environmental benefits of City Park

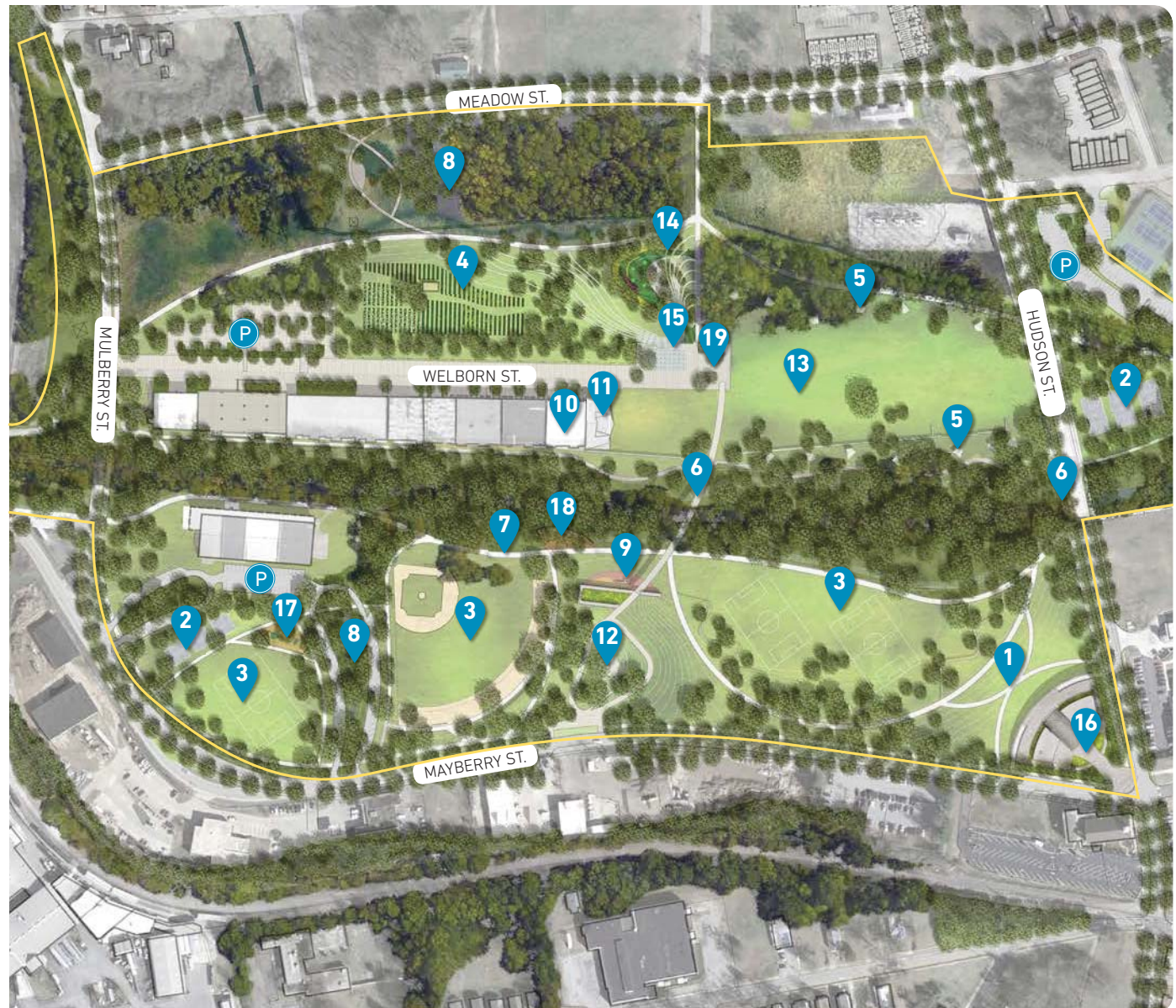
Stream & Wetland Restoration Coordination with local permitting consultants and advocacy groups

Parks Conservancy Arrangement for discussion of trust or conservancy for park stewardship

Observation Area Concepts Development of ideas for City Park Overlook

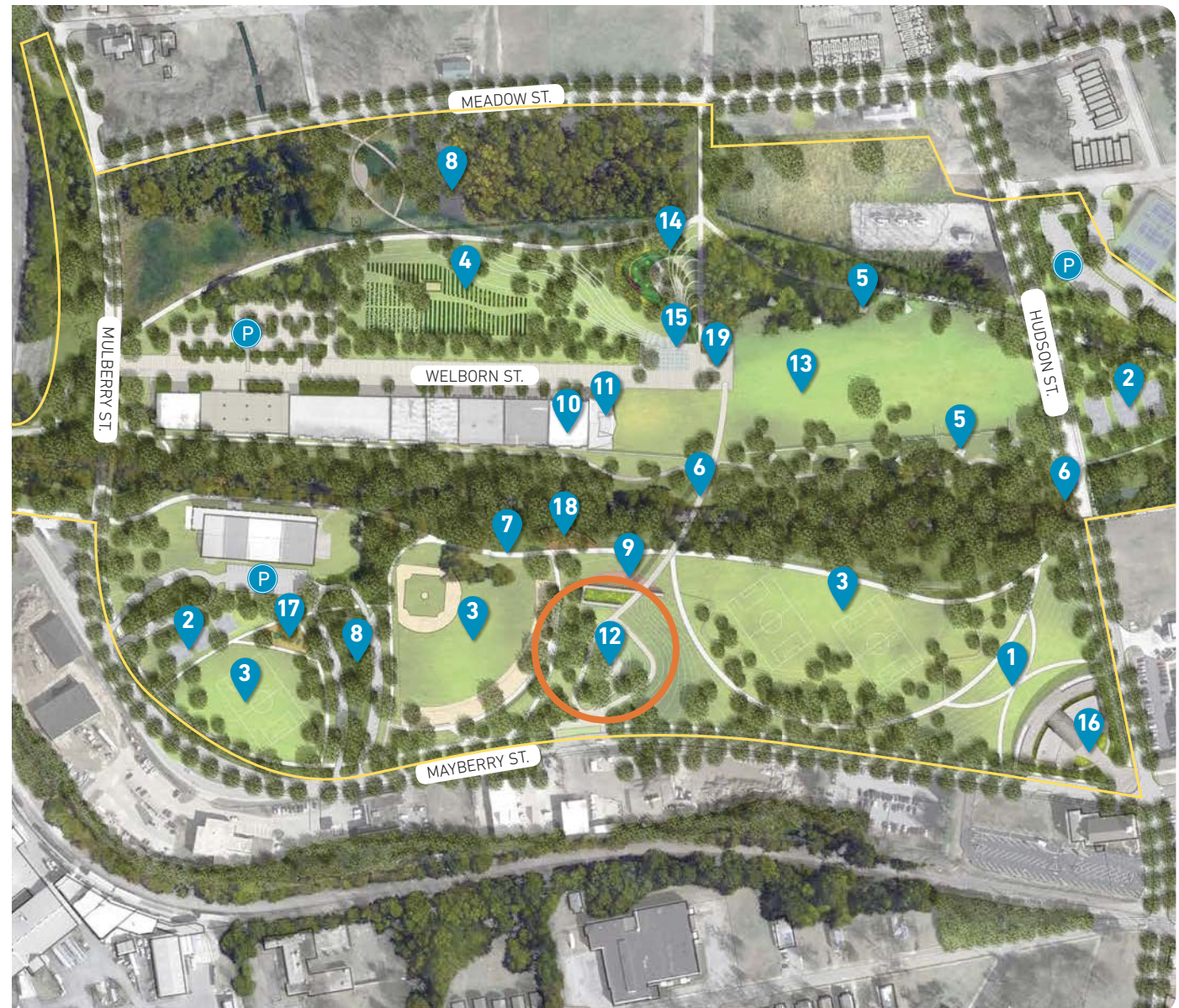
ACTIVE TASKS OBSERVATION AREA

- 1| Garden Walk
- 2| Basketball Courts
- 3| Multi-purpose Fields
- 4| Community Gardens
- 5| Picnic Pavilions
- 6| Pedestrian Bridge
- 7| Swamp Rabbit Trail
- 8| Bioswale & Wetland
- 9| Adult Fitness/Climbing Wall
- 10| Visitor's Center
- 11| The Gathering Hall Stage
- 12| Observation Area
- 13| Great Lawn
- 14| Destination Playground
- 15| Sprayground Water Feature
- 16| Promenade + Park Cafe
- 17| Neighborhood Playground
- 18| Natural Play
- 19| Welborn Square



ACTIVE TASKS OBSERVATION AREA

- 1| Garden Walk
- 2| Basketball Courts
- 3| Multi-purpose Fields
- 4| Community Gardens
- 5| Picnic Pavilions
- 6| Pedestrian Bridge
- 7| Swamp Rabbit Trail
- 8| Bioswale & Wetland
- 9| Adult Fitness/Climbing Wall
- 10| Visitor's Center
- 11| The Gathering Hall Stage
- 12| Observation Area
- 13| Great Lawn
- 14| Destination Playground
- 15| Sprayground Water Feature
- 16| Promenade + Park Cafe
- 17| Neighborhood Playground
- 18| Natural Play
- 19| Welborn Square



ACTIVE TASKS OBSERVATION AREA



+40 feet

ACTIVE TASKS OBSERVATION AREA



ACTIVE TASKS OBSERVATION AREA



+80 feet

ACTIVE TASKS OBSERVATION AREA



+80 feet

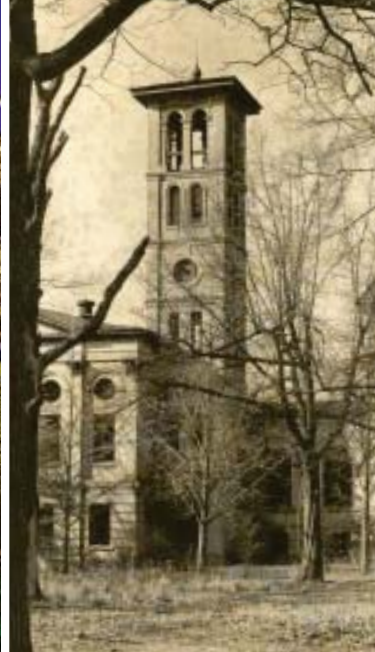
ACTIVE TASKS OBSERVATION AREA



GREENVILLE MILL



LIBERTY BRIDGE



FURMAN BELL TOWER



SOUTHERN RAILWAY PASSENGER STATION



POE MILL



MILLS MILL



MILLS MILL



HUGUENOT MILL

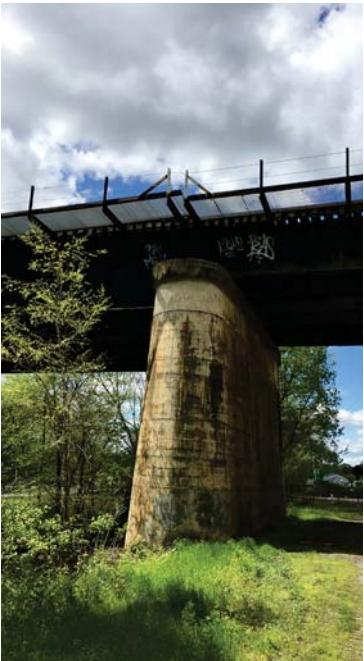


FALLS PARK



HISTORIC CITY HALL

ACTIVE TASKS OBSERVATION AREA



RAILROAD BRIDGE



WELBORN WAREHOUSE



TIMBER RAIL BRIDGE



TTR BIKES BUILDING



WELBORN WAREHOUSE

ACTIVE TASKS OBSERVATION AREA

WOOD

MASONRY

WEATHERED STEEL

GLASS



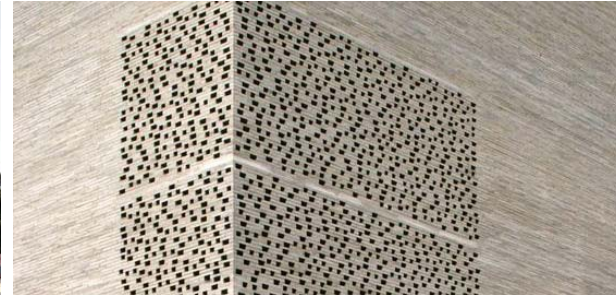
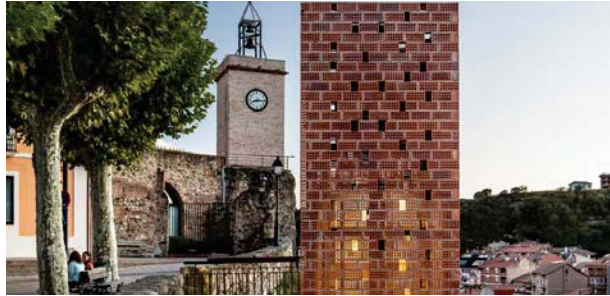
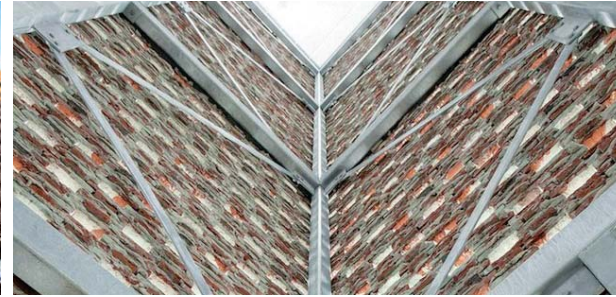
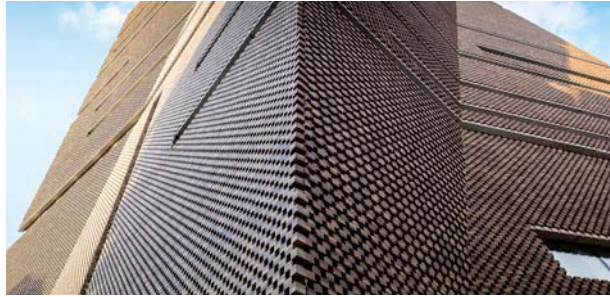
ACTIVE TASKS OBSERVATION AREA

WOOD

MASONRY

WEATHERED STEEL

GLASS



ACTIVE TASKS OBSERVATION AREA

WOOD

MASONRY

WEATHERED STEEL

GLASS



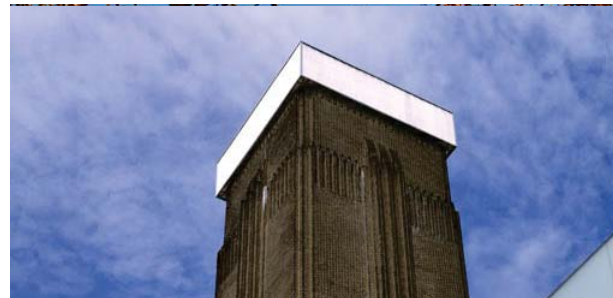
ACTIVE TASKS OBSERVATION AREA

WOOD

MASONRY

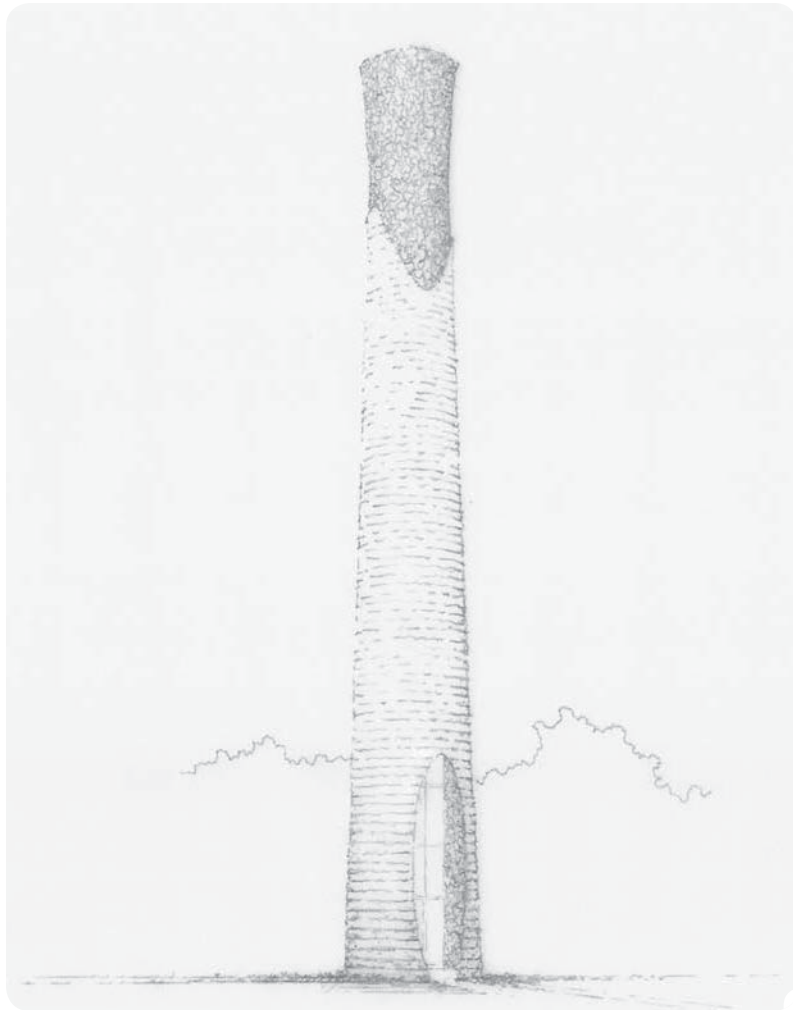
WEATHERED STEEL

GLASS

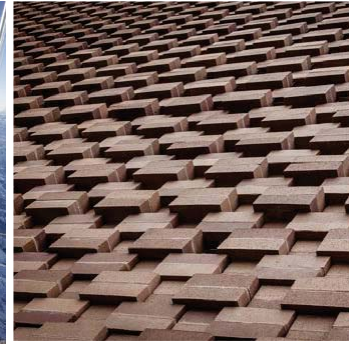
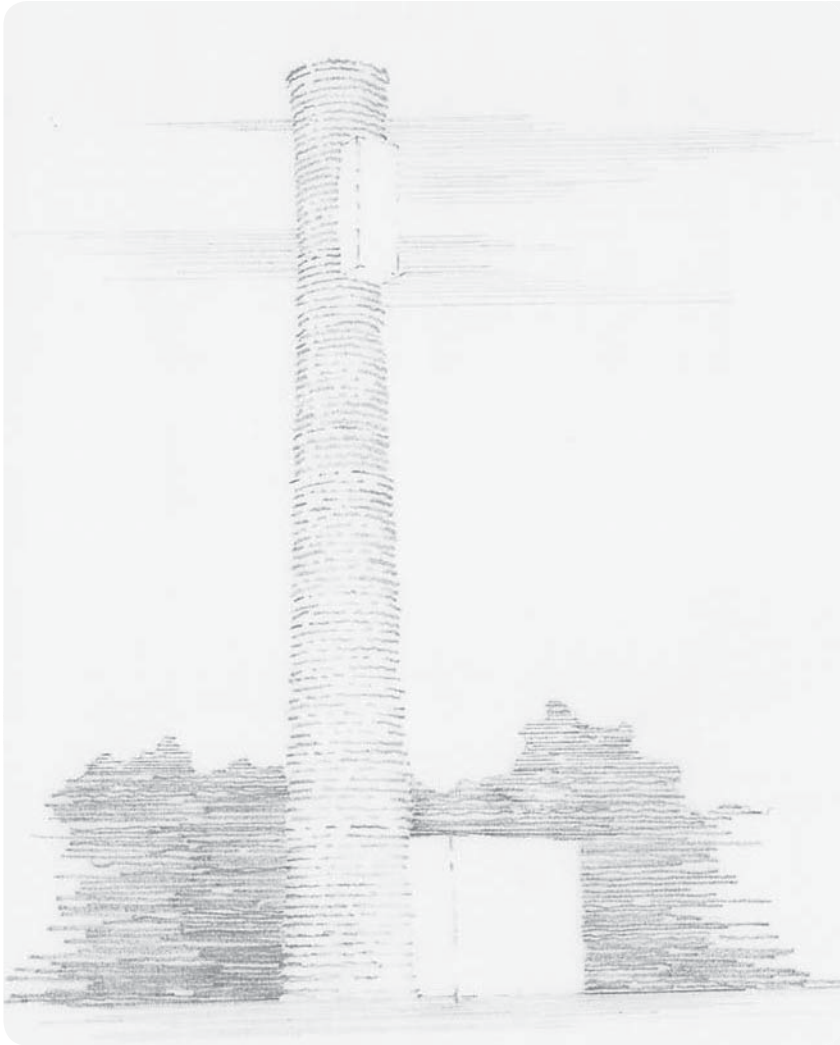


ACTIVE TASKS OBSERVATION AREA

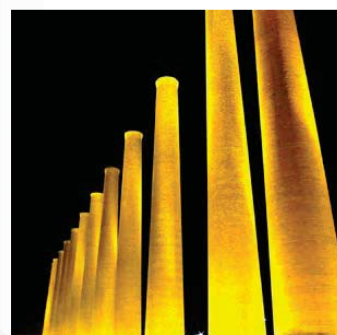
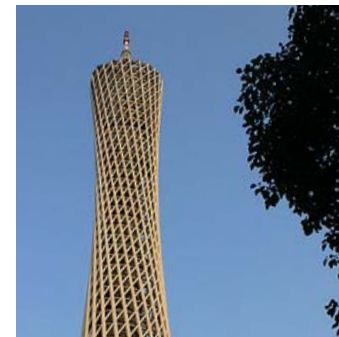
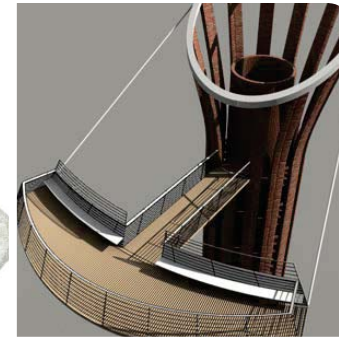
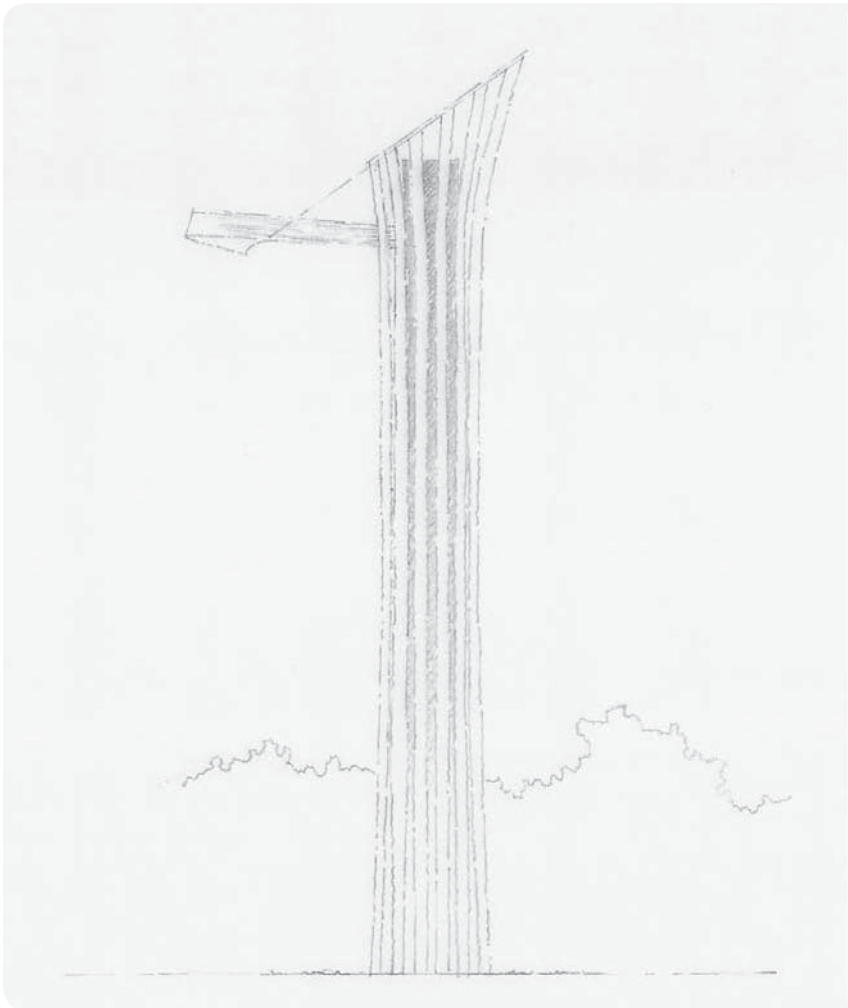
ACTIVE TASKS OBSERVATION AREA



ACTIVE TASKS OBSERVATION AREA



ACTIVE TASKS OBSERVATION AREA



ACTION ITEMS



ACTION ITEMS

Design, Engineering and Permitting 50% documentation for Phase 1



ACTION ITEMS

Design, Engineering and Permitting 50% documentation for Phase 1

Property Acquisition Welborn Street & wetland properties



ACTION ITEMS

Design, Engineering and Permitting 50% documentation for Phase 1

Property Acquisition Welborn Street & wetland properties

Project Guidance Convene Advisory Committee to align effort with guiding principles & community goals

Advisory Committee Purpose

Align ongoing City Park development with the Guiding Principles developed by the community and adopted by City Council and with the recently completed City Park Implementation Plan.

Advisory Committee Responsibilities

Serve as an advocate for the City Park

Serve as a community resource for accurate information and updates regarding City Park

Provide guidance to City staff and consultant project team through the park development process, including:

- Development and refinement of park features and amenities
- Development of park programming, events and activities
- Community relations and the creation of partnerships for the funding, design, construction, operation and maintenance of City Park
- Public information and communications planning
- Community events for project milestones
- Construction Phasing

ACTION ITEMS

Design, Engineering and Permitting 50% documentation for Phase 1

Property Acquisition Welborn Street & wetland properties

Project Guidance Convene Advisory Committee to align effort with guiding principles & community goals

Project Fundraising Convene Funding Committee to develop partnerships and sponsorships

Funding & Partnership Committee Purpose

Develop the public & private partnerships that will provide the technical, financial and in-kind support required for the successful realization of City Park

Funding & Partnership Committee Responsibilities

Provide guidance to City staff and consultant project team through the park development process, including:

- Real Estate: acquisition & exchange
- In-Kind Donations & Partnerships
- Property Owner Coordination
- Government Relations: funding opportunities & regulatory issues
- Private Sponsorships and Donations
- Endowment: programming, maintenance and operations
- Construction Phasing

ACTION ITEMS

Design, Engineering and Permitting 50% documentation for Phase 1

Property Acquisition Welborn Street & wetland properties

Project Guidance Convene Advisory Committee to align effort with guiding principles & community goals

Project Fundraising Convene Funding Committee to develop partnerships and sponsorships

Street Improvements Identify enabling projects for fast track



Hudson Street

ACTION ITEMS

Design, Engineering and Permitting 50% documentation for Phase 1

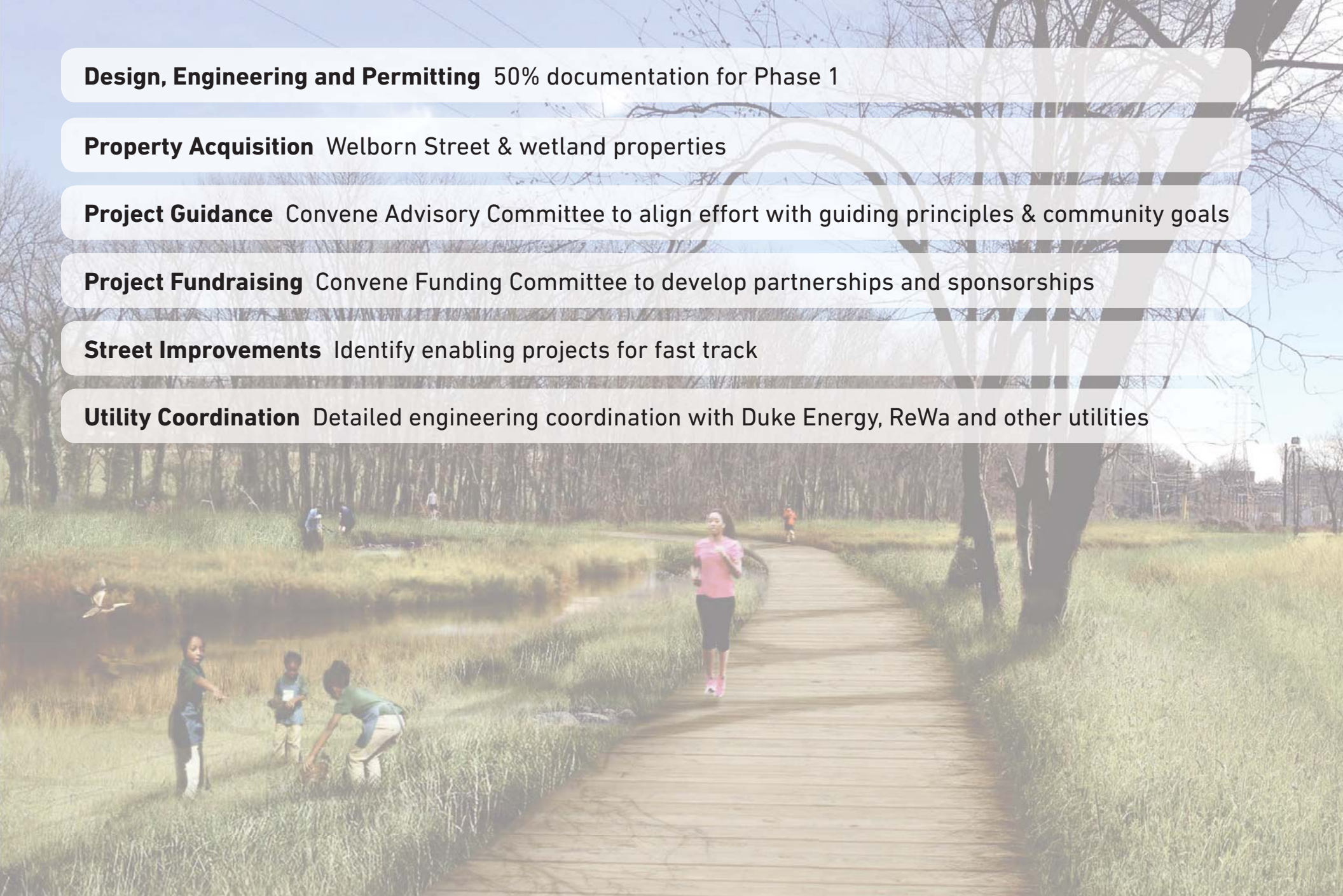
Property Acquisition Welborn Street & wetland properties

Project Guidance Convene Advisory Committee to align effort with guiding principles & community goals

Project Fundraising Convene Funding Committee to develop partnerships and sponsorships

Street Improvements Identify enabling projects for fast track

Utility Coordination Detailed engineering coordination with Duke Energy, ReWa and other utilities



ACTION ITEMS

Design, Engineering and Permitting 50% documentation for Phase 1

Property Acquisition Welborn Street & wetland properties

Project Guidance Convene Advisory Committee to align effort with guiding principles & community goals

Project Fundraising Convene Funding Committee to develop partnerships and sponsorships

Street Improvements Identify enabling projects for fast track

Utility Coordination Detailed engineering coordination with Duke Energy, ReWa and other utilities

Project Schedule Phase 1 milestones

2017

Design, Engineering, Permitting, Fundraising and Acquisition

2018 Spring

Phase 1 Groundbreaking

2020 Spring

Phase 1 Open to Public

DISCUSSION



SCALE COMPARISON

